
Experimental studies on double pipe heat exchanger for heat transfer enhancement by using nanofluids

Pothina Surya Rao*

T.Satish, K.Sai Kumar, G.Vijay Kumar**

G.L.Kiran Kumar Naidu, Y.Naresh***

ReddeppaKatigalla****

Abstract

Heat transfer is one of the most important processes in many industries. Base heat transfer fluid like water normally is having low thermal conductivity. Since thermal conductivity is considered as important factor for rapid cooling and heating application, advanced heat transfer fluid called nano fluid is introduced. Nano particle is low concentration cooling agent which uniformly scattered in nano fluid Suspensions of Nano particles shows better enhancement of stability, heat transfer capabilities and reduction of particle clogging. All researchers tried to increase the heat transfer rate by controlling the parameters like shape, size, clustering, collision, porous layer, melting point of nanoparticle. Previously we were using only refrigerant as working fluid in heat exchanger for cooling purpose. The presence of fluorine and chlorine make the refrigerant non toxic. Hence the whole world attracted towards the Nano fluid. Finally this project is to be carried out through Concentric Double pipe Heat Exchanger with base fluid water and nano particles like MnO_2 . Study is made to ascertain the effect of Nano fluids in enhancing the effectiveness of heat exchanger by varying the concentration of nano fluids.

Copyright © 2017 International Journals of Multidisciplinary Research Academy. All rights reserved.

Keywords:

Thermal conductivity;
Heat transfer;
Nano fluid;
Double pipe heat exchanger;
Nano particles.

Author correspondence:

ReddeppaKatigalla,
Assistant Professor, Department of Mechanical Engineering, CMR Engineering, Hyderabad, India

1. Introduction

A heat exchanger is a device used to transfer heat between one or more fluids. The fluids may be separated by a solid wall to prevent mixing or they may be in direct contact. The important heat transferring fluids are coolants and heat transfer oils. A coolant is a fluid which flows through

*Assistant Professor, Department of Mechanical Engineering, BITS, VIZAG, INDIA

**Research Scholars, Department of Mechanical Engineering, BITS, VIZAG, INDIA

***Research Scholars, Department of Mechanical Engineering, BITS, VIZAG, INDIA

****Assistant Professor, Department of Mechanical Engineering, CMR Engineering, Hyderabad, India

or around a device to prevent its overheating, transferring the heat produced by the device to other devices that use or dissipate it. An emerging and new classes of coolants are nano fluids which consist of a carrier liquid, such as water, dispersed with tiny nano-scale particles known as nanoparticles. Nanoparticles such as MnO₂, Graphite, Al₂O₃ are used in nano fluids.

Table 1 Characteristics of nanoparticles used in experiment

PROPERTIES	NANO MATERIALS		
	Manganese Dioxide (MnO ₂)	Aluminium Oxide (Al ₂ O ₃)	GRAPHITE
Molar mass (g/mol)	86.9368	101.96	-----
Melting Point (°C)	535	2,072	-----
Density (g/cm ³)	5.03	3.95	2.09–2.23
Specific heat (J/kg)	480	451-955	710-830
Thermal Conductivity (W/m-K)	30-60	12-38.5	25-470

2. Literature Survey

MadhushreeKole at all [1] [2] [3] [4] [5], investigated on the combinations of base fluid and nano particle such as Ethylene glycol-ZnO, Water-CuO, Gear oil-CuO, Ethylene glycol-ZnO(no surfactant), Ethylene glycol-Zinc Oxide. Then they studied properties like Thermal Conductivity, Volume concentration, Pool Boiling, Viscosity and Thermal Resistance. It is found that there is an enhancement in thermal conductivity, viscosity, boiling heat transfer coefficient and total thermal resistance. The Theoretical investigation is carried out by C. Yang et. al on combination of base fluid and nano particles and it is found that Nusselt number has optimal bulk mean nano particle volume fraction value for alumina water nano fluids, whereas it only increases monotonously with bulk mean nano particle volume fraction for titanium water nanofluids.

The numerical type of investigation is carried out by Adnan M. Hussein, Faris Mohammed Ali, A. Azariet. al and it is found that thermal conductivity and viscosity increase with increasing the volume concentration of nanofluids. An experiment type of investigation is carried out by Y. Raja Sekhar S. Zeinali Heris et al and it is found that the Nusselt number and friction factor increases with increases of particle concentration. But, friction factor decreases with increase of Reynolds number of flow whereas the Nusselt number increases and enhancement of heat transfer coefficient. Both experimental and numerical investigation is carried out by A. Azariet. Al results showed that the thermal performance of nanofluid is higher than that of the base fluid and the heat transfer enhancement increases with the particle volume concentration and Reynolds number.

3. Problem Description

The objective of this report is to provide enhanced heat transfer rate through nano fluids in place of pure working fluid in heat exchangers. In this study, Graphite, MnO₂ and Al₂O₃ nanoparticles are suspended in water with concentration upto 1.5% by volume has been selected as a coolant in a typical horizontal double-tube counter flow heat exchanger because of their reasonably good thermal properties and easy availability. Study on heat transfer investigation by changing the particle shape can be taken up as future work. Water has been chosen as heat transfer base fluid. The experiments are conducted in the heat exchanger for different concentrations of nano particles.

4. Experimental Analysis

The experimental investigation is carried by varying the volume concentration (0.25%, 0.5%, 0.75%, 1%) of various nano particles such as MnO₂, Graphite and Al₂O₃ in a double pipe heat exchanger and the observations are tabulated

Table 5.1: Water as base fluid

S.NO	T _{ci} °C	T _{ho} °C	T _{co} °C	T _{hi} °C	M _c (LPM)	M _h (LP M)	Q _c (Watts)	Q _h (Watts)	Q (Watts)	ΔT °C	U (w/m ² K)
	T1	T2	T3	T4							
1	28.8	44.2	32.	49.2	1	0.8	244.24	279.13	261.87	16.13	458.81
2	28.3	41.3	31.0	45.6	1	1.2	188.41	360.08	274.24	13.78	551.44
3	28.3	40.8	31.5	42.8	1	1.5	223.30	209.35	216.32	11.24	430.35
4	27.8	38.9	31.9	40.8	1	1.8	286.11	238.65	262.38	9.95	746.11
5	27.4	37.2	30.6	39.3	1	2	223.06	293.09	258.19	9.23	791.46
6	27.2	36.8	29.5	38.3	1	2.2	160.50	230.28	195.39	9.19	601.56
7	26.9	35.4	29.0	36.7	1	2.5	146.54	226.79	186.66	8.09	692.82
8	27.9	38.6	30.5	39.1	1.5	0.8	212.16	280.13	275.61	9.18	841.86
9	30.9	39.3	31.2	41.8	1.5	1.8	210.96	330.96	291.64	8.13	723.62
10	30.3	37.1	32.8	40.6	1.5	2	180.56	260.89	199.67	9.74	801.34

Table 5.2: MnO₂ 0.25% (25gm) per 10 lits of water

S.NO	T _{ci} °C	T _{ho} °C	T _{co} °C	T _{hi} °C	M _c (LP M)	M _h (LP M)	Q _c (W)	Q _h (W)	Q (W)	ΔT °C	U w/m ² k	Um
	T1	T2	T3	T4								Uw
1	27.2	40.8	30.9	44.0	1	1.2	257.62	267.96	262.79	13.74	563.09	1.02
2	27.6	41.0	30.7	42.7	1	1.5	215.84	177.94	196.89	12.68	801.34	1.86
3	27.2	39.5	30.0	40.4	1	1.8	194.96	113.04	154.91`	11.32	884.92	1.18
4	27.0	38.5	29.9	39.9	1	2	201.92	195.39	198.65	10.73	701.82	1.12
5	27.2	36.9	30.0	38.6	1	2.2	194.96	260.98	227.97	9.13	786.48	1.13
6	28.1	37.4	31.2	40.8	1.5	0.8	211.16	250.68	225.71	10.16	830.69	1.29
7	28.2	38.8	30.6	41.0	1.5	1.2	189.63	299.37	244.56	10.01	799.68	1.38
8	27.9	37.8	30.1	39.8	1.5	1.8	228.36	179.86	198.67	11.67	1037.6	1.89
9	28.3	38.3	31.4	41.7	1.5	2	198.68	283.58	228.69	9.89	960.25	1.23
10	28.2	39.2	30.9	42.3	1.5	2.5	233.84	301.25	286.74	10.41	854.36	1.39

Table 5.3: MnO₂ 0.50% (50gm) per 10 lits of water

S.NO	T _{ci} °C	T _{ho} °C	T _{co} °C	T _{hi} °C	M _c (LP M)	M _h (LP M)	Q _c (W)	Q _h (W)	Q (W)	ΔT °C	U W/mK	Um
	T1	T2	T3	T4								Uw
1	30.2	39.9	32.1	42.8	1	1.2	132.01	242.84	187.42	10.19	690.40	1.25
2	31.1	38.3	34.0	41.6	1	1.5	201.47	345.42	273.44	7.39	1046.92	2.43
3	29.8	36.9	33.2	42.0	1	1.8	236.21	640.61	438.41	7.91	1268.19	1.61
4	30.3	37.4	32.8	41.8	1	2	173.68	614.09	393.88	8.01	1391.32	2.31
5	30.4	38.1	33.1	42.7	1	2.2	187.58	706.20	446.89	8.61	1468.56	2.44
6	29.9	38.8	32.8	41.1	1.5	0.8	226.38	501.61	335.69	7.89	980.56	1.89
7	30.3	37.9	33.2	41.3	1.5	1.2	199.56	381.01	259.67	8.07	880.38	1.17
8	31.7	39.0	32.9	41.6	1.5	1.8	178.68	401.78	301.52	9.25	790.66	1.56
9	30.4	38.7	31.8	40.8	1.5	2	244.62	321.56	280.78	7.06	1021.88	1.13
10	30.2	39.6	31.9	40.6	1.5	2.2	251.44	311.75	274.35	8.16	978.26	1.27

Table 5.4: MnO₂ 0.75% (75gm) per 10 lits of water

S.NO	T _{ci} °C	T _{ho} °C	T _{co} °C	T _{hi} °C	M _c (LPM)	M _h (LPM)	Q _c (W)	Q _h (W)	Q (W)	ΔT °C	U W/mK	Um
	T1	T2	T3	T4								Uw
1	29.2	43.6	32.4	45.8	1	1.2	222.94	184.22	203.58	13.89	601.70	1.09
2	28.3	40.9	32.0	43.4	1	1.5	257.77	261.68	259.72	11.98	713.40	1.65
3	27.1	39.2	31.1	42.5	1	1.8	278.67	414.51	346.59	11.64	842.48	1.06
4	26.9	36.8	30.5	40.3	1	2	250.80	404.74	327.77	10.14	883.23	1.18
5	26.9	36.8	30.1	39.6	1	2.2	222.94	429.86	326.40	9.18	1006	1.67

Table 5.5: MnO₂ 1.0% (100gm) per 10 lits of water

S.NO.	T _{ci} °C	T _{ho} °C	T _{co} °C	T _{hi} °C	M _c (LPM)	M _h (LPM)	Q _c (W)	Q _h (W)	Q (W)	ΔT °C	U W/mK	Um
	T1	T2	T3	T4								Uw
1	28.2	35.1	29.6	38.3	1	0.8	96.83	178.64	137.75	7.76	602.18	1.11
2	29.8	37.6	32.3	40.2	1	1.2	172.91	217.72	195.31	7.84	794.86	1.84
3	29.9	38.1	30.6	40.0	1	1.5	48.41	198.88	123.64	8.76	898.43	1.20
4	29.4	36.0	31.2	39.8	1	1.8	124.49	477.31	300.91	7.55	1127.64	1.42
5	29.8	36.2	32.7	40.1	1	2.0	200.57	544.31	372.44	6.88	1531.66	2.54
6	29.9	36.7	32.0	40.5	1	2.2	145.24	588.38	366.81	7.61	1363.80	1.72

Table 5.6: MnO₂ 1.5% (150gm) per 10 lits of water

S.NO	T _{ci} °C	T _{ho} °C	T _{co} °C	T _{hi} °C	M _c (LPM)	M _h (LPM)	Q _c (W)	Q _h (W)	Q (W)	ΔT °C	U W/mK	Um
	T1	T2	T3	T4								Uw
1	29.2	39.0	31.3	41.8	1	1.2	144.59	234.47	189.53	10.14	628.85	1.14
2	30.6	40.3	31.9	42.0	1	1.5	89.51	177.94	133.72	9.89	882.55	2.05
3	30.2	39.2	31.9	42.3	1	1.8	117.05	389.39	253.22	9.68	1040.14	1.39
4	29.9	38.6	31.4	41.1	1	2.0	172.14	348.91	260.52	8.64	953.14	1.20
5	30.3	40.2	32.9	42.8	1	2.2	179.02	399.16	289.09	9.64	848.50	1.41

Table 5.7: Graphite 0.25% (25gm) per 10 lits of water

S.NO.	T _{ci} °C	T _{ho} °C	T _{co} °C	T _{hi} °C	M _c (LPM)	M _h (LPM)	Q _c (W)	Q _h (W)	Q (W)	ΔT °C	U W/mK	Um
	T1	T2	T3	T4								Uw
1	31.9	41.1	32.4	43.0	1	0.8	34.82	106.07	70.44	9.88	701.72	1.52
2	32.1	43.1	34.3	45.1	1	1.2	153.21	167.48	160.34	10.34	877.64	1.59
3	31.9	39.8	33.9	42.6	1	1.5	139.28	293.09	216.18	8.29	937.83	2.17
4	30.9	38.9	33.2	42.9	1	1.8	160.17	502.44	331.30	8.82	1062.79	1.42
5	30.8	39.0	32.9	42.0	1	2.0	146.24	418.70	282.47	8.64	925.02	1.16
6	31.4	38.8	33.4	42.3	1	2.2	139.28	537.33	338.30	8.12	1178.80	1.95
7	32.2	40.9	34.9	42.5	1.5	0.8	198.36	321.73	216.38	8.91	944.56	1.86
8	31.4	38.7	34.0	41.8	1.5	1.2	211.65	361.25	225.62	7.86	690.42	1.72
9	31.9	43.5	33.8	41.7	1.5	1.8	223.42	287.79	253.67	9.04	976.23	1.38
10	32.1	41.6	33.7	43.1	1.5	2	199.62	221.61	211.87	7.99	789.56	1.56

Table 5.8: Graphite 0.50% (50gm) per 10 lits of water

S.NO.	$T_{ci}^{\circ}C$	$T_{ho}^{\circ}C$	$T_{co}^{\circ}C$	$T_{hi}^{\circ}C$	M_c (LPM)	M_h (LPM)	Q_c (W)	Q_h (W)	Q (W)	ΔT $^{\circ}C$	U W/mK	U_g
	T1	T2	T3	T4								U_w
1	32.2	39.6	33.9	41.9	1	0.8	187.64	128.40	158.02	8.19	645.91	1.40
2	31.9	39.1	32.8	42.0	1	1.2	162.54	242.84	152.69	8.15	830.08	1.50
3	31.6	39.9	32.7	41.3	1	1.5	176.44	146.54	111.49	8.44	973.75	2.26
4	31.0	38.3	33.6	42.3	1	1.8	180.69	502.44	341.56	7.97	1212.56	1.62
5	32.0	38.7	34.0	40.8	1	2.0	138.99	293.09	216.04	6.74	906.92	1.14
6	31.9	39.2	34.2	42.5	1	2.2	159.84	506.62	333.23	7.78	1211.88	2.01
7	32.6	38.8	33.5	41.0	1.5	0.8	188.65	391.78	230.78	8.16	789.66	1.02
8	32.7	37.9	34.8	40.9	1.5	1.2	192.36	241.36	218.26	7.91	801.32	1.26
9	32.3	38.9	34.0	42.1	1.5	1.8	201.33	302.55	229.36	6.89	1036.67	1.44
10	31.9	39.2	33.9	41.9	1.5	2	260.31	388.65	321.89	7.89	1136.65	1.38

Table 5.9: Graphite 0.75% (75gm) per 10 lits of water

S.NO	$T_{ci}^{\circ}C$	$T_{ho}^{\circ}C$	$T_{co}^{\circ}C$	$T_{hi}^{\circ}C$	M_c (LPM)	M_h (LPM)	Q_c (W)	Q_h (W)	Q (W)	ΔT $^{\circ}C$	U W/mK	U_g
	T1	T2	T3	T4								U_w
1	32.3	39.7	34.1	42.8	1	0.8	124.84	173.06	148.95	8.03	724.83	1.57
2	32.2	39.3	34.8	43.0	1	1.2	180.32	309.83	245.07	7.63	908.78	1.64
3	31.9	39.0	34.3	43.2	1	1.5	166.45	439.63	33.04	7.96	1077.16	2.51
4	32.0	38.6	33.9	42.9	1	1.8	131.77	540.12	335.94	7.73	1229.64	1.65
5	31.2	38.3	34.0	41.9	1	2.0	194.20	502.44	348.32	7.49	1315.81	1.66
6	31.0	38.0	33.6	41.6	1	2.2	180.32	552.68	366.50	7.48	1386.33	2.31

Table 5.10: Al_2O_3 0.25% (25 gm) per 10 lits of water

S.NO.	$T_{ci}^{\circ}C$	$T_{ho}^{\circ}C$	$T_{co}^{\circ}C$	$T_{hi}^{\circ}C$	M_c (LPM)	M_h (LPM)	Q_c (W)	Q_h (W)	Q (W)	$\Delta T^{\circ}C$	U W/mK	U_g
	T1	T2	T3	T4								U_w
1	33.9	41.2	35.6	44.4	1	0.8	118.39	178.64	148.51	8.02	723.93	1.57
2	33.7	40.9	35.4	44.8	1	1.2	118.38	326.58	222.48	8.25	763.01	1.38
3	33.8	41.3	36.9	45.0	1	1.5	215.89	387.29	301.59	7.79	1095.40	2.54
4	33.6	40.7	35.2	43.0	1	1.8	111.42	288.90	200.16	7.44	861.20	1.21
5	33.8	40.8	36.3	42.9	1	2.0	174.10	293.09	233.59	6.79	973.37	1.32
6	33.6	41.1	36.7	44.2	1	2.2	215.89	475.92	345.90	7.39	1324.34	2.21
7	33.9	41.4	36.1	43.9	1.5	0.8	211.68	301.56	511.36	7.01	976.21	1.89
8	33.5	40.7	35.9	42.7	1.5	1.2	188.63	337.59	223.65	8.26	699.36	1.13
9	33.7	42.0	35.7	44.0	1.5	1.8	210.56	281.63	243.28	6.97	1067.29	2.01
10	33.9	41.8	36.4	43.6	1.5	2	179.74	387.92	201.68	8.34	880.34	1.67

Table 5.11: Al_2O_3 0.50% (50 gm) per 10 lits of water

S.NO	$T_{ci}^{\circ}C$	$T_{ho}^{\circ}C$	$T_{co}^{\circ}C$	$T_{hi}^{\circ}C$	M_c (LPM)	M_h (LPM)	Q_c (W)	Q_h (W)	Q (W)	ΔT $^{\circ}C$	U W/mK	U_a
	T1	T2	T3	T4								U_w
1	33.9	42.9	35.9	44.7	1	0.8	139.01	111.65	125.33	8.89	698.88	1.52
2	33.8	42.8	35.7	45.0	1	1.2	132.05	184.22	158.14	9.14	789.54	1.43
3	33.7	41.6	36.0	44.3	1	1.5	159.85	282.62	221.23	8.09	973.73	2.18
4	33.8	42.4	36.3	45.1	1	1.8	173.75	339.14	256.44	8.69	834.95	1.12
5	33.6	41.8	36.1	44.9	1	2	173.71	432.65	303.20	8.49	1010.4	1.27
6	33.8	42.0	35.8	44.5	1	2.2	139.01	383.80	261.40	7.64	1801.5	2.96
7	33.9	42.8	36.0	44.8	1.5	0.8	199.76	301.21	253.36	8.81	786.11	1.38
8	34.1	41.8	35.6	44.0	1.5	1.2	163.89	378.79	231.25	9.27	960.37	1.47

9	34.8	41.6	36.4	43.9	1.5	1.8	230.65	289.12	264.67	7.89	870.25	1.63
10	33.7	42.5	35.9	43.7	1.5	2	221.89	244.23	228.83	9.02	928.36	1.79

5. Solution Methodology

The rate of heat transfer through the Hot Water

$$Q_h = m_h C_{ph} (T_{hi} - T_{ho}) \quad (1)$$

The rate of heat transfer through the Hot Water

$$Q_c = m_c C_{pc} (T_{co} - T_{ci}) \quad (2)$$

Where

M_h = mass flow rate, kg/ sec; C_{ph} = Specific heat, j/kg k; T_{hi} = Hot water inlet temperature in °c;
 T_{ho} = Hot water outlet temperature in °c; M_c = mass flow rate, kg/ sec; C_{pc} = Specific heat, j/kg k;
 T_{ci} = Cold water inlet temperature in °c; T_{co} = Cold water outlet temperature in °c

The heat transfer rate in the Heat exchanger

$$Q = (Q_h + Q_c) / 2 \quad (3)$$

Logarithmic Mean Temperature Difference for heat exchanger

$$LMTD = \frac{\Delta T_A - \Delta T_B}{\ln \left(\frac{\Delta T_A}{\Delta T_B} \right)} = \frac{\Delta T_A - \Delta T_B}{\ln \Delta T_A - \ln \Delta T_B} \quad (4)$$

Where, $\Delta T_A = (T_{hi} - T_{co})$; $\Delta T_B = (T_{ho} - T_{ci})$

The overall heat transfer rate in Heat exchanger is given by

$$U = Q / (A * LMTD) \quad (5)$$

Where,

$A = \pi D L$ in m^2 ; D_i = ID of inner tube = 15mm; L = Length of tube = 750mm

6. Result and discussion

Figure 1 to 5 shows the variation of Overall heat transfer coefficient (U). It is plotted on Y axis and variation of hot water mass flow rate (M_h) on X axis a given cold water mass flow rates. Each graph is drawn for different concentration of Nano particles. Figure 6 to 10 shows the variation of enhancement ratio of nano fluids with respect to base fluid as water. The Enhancement ratio defined as the ratio of the Overall heat transfer coefficient of Nano fluid to the Overall heat transfer coefficient of pure water.

Figure 1 shows variation for 0.25% concentration of Nano particles. The overall heat transfer coefficient for pure water is varying from the values of 450 to 700 $w/m^2 K$ when the mass flow rate of hot water varies from 0.8 to 2.2 while keeping cold water of mass flow rate constant at 1.0 LPM. The corresponding values for 0.25% concentration of MnO_2 in cold water varies from 580 to 800 $w/m^2 K$. So there is a clear improvement of the overall coefficient when compared with pure water. Similarly, the corresponding values of Graphite is varying from 700 to 1200 $w/m^2 K$ and also the corresponding values of Al_2O_3 is varying from 700 to 1300 $w/m^2 K$.

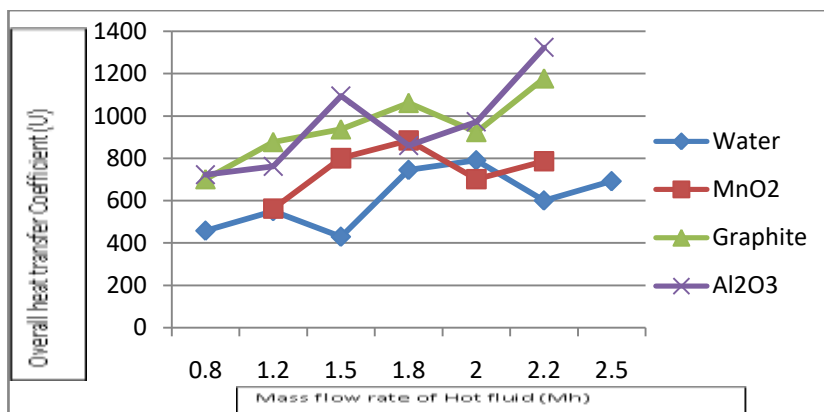


Figure 1: 0.25% at Mc=1 (25 gm of Nano particle in 10 lits of cold water)

The Graph 2 is plotted to show variation for 0.50% concentration of Nano particles. Mass flow rate of cold water is kept constant at 1.0 LPM while mass flow rate of hot water varied from 0.8 to 2.5 LPM. In the case of the overall heat transfer coefficient variation for the case of 0.5% concentration in cold fluid for MnO₂, Graphite and Al₂O₃, the overall heat transfer coefficient of the pure water is varying from 400 to 800 w/m²K. Similarly the corresponding values of the overall heat transfer coefficient for MnO₂ is varying from 700 to 1500 w/m² K. In graphite the overall heat transfer coefficient is varies from 600 to 1200 w/m² K and for Al₂O₃ the overall heat transfer coefficient is varying from 700 to 1800 w/m² K.

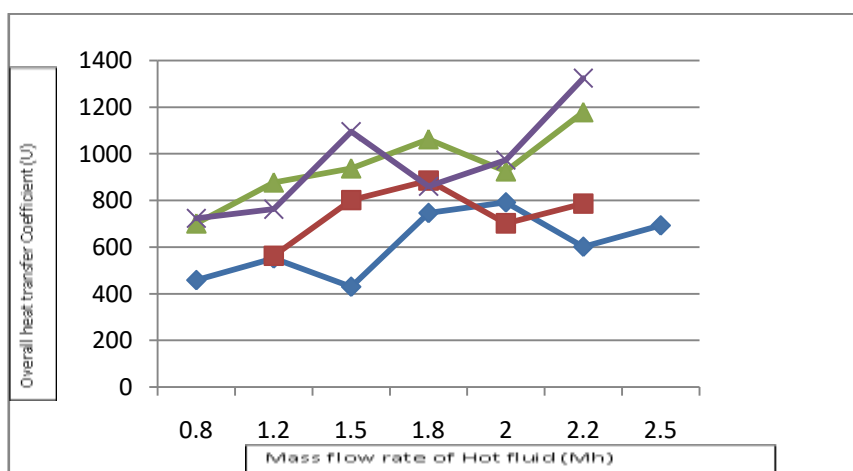


Figure 2: 0.50% at Mc=1 (50 gm of Nano particle in 10 lits of cold water)

The Graph 3 is plotted to show variation for 0.75% concentration of nano particles. Mass flow rate of cold water is kept constant at 1.0 LPM while mass flow rate of hot water varied from 0.8 to 2.5 LPM. In this case the pure water, the overall heat transfer coefficient is varying from 430 to 800 w/m²K. Similarly the corresponding values of the overall heat transfer coefficient for MnO₂ is varying from 600 to 1000 w/m² K. Similarly in graphite the overall heat transfer coefficient is varying from 700 to 1800 w/m² K.

The Graph 4 is plotted to show variation for 0.25% concentration of Nano particles. Mass flow rate of cold water is kept constant at 1.5 LPM while mass flow rate of hot water varied from 0.8 to 2.0 LPM. In this case pure water of the overall heat transfer coefficient is varying from 600 to 800 w/m² K. Similarly the corresponding MnO₂ of the overall heat transfer coefficient is varying from 800 to 1000 w/m² K, In graphite the overall heat transfer coefficient is varying from 700 to 900 w/m² K and for Al₂O₃ the overall heat transfer coefficient is varying from 700 to 1150 W/m² K.

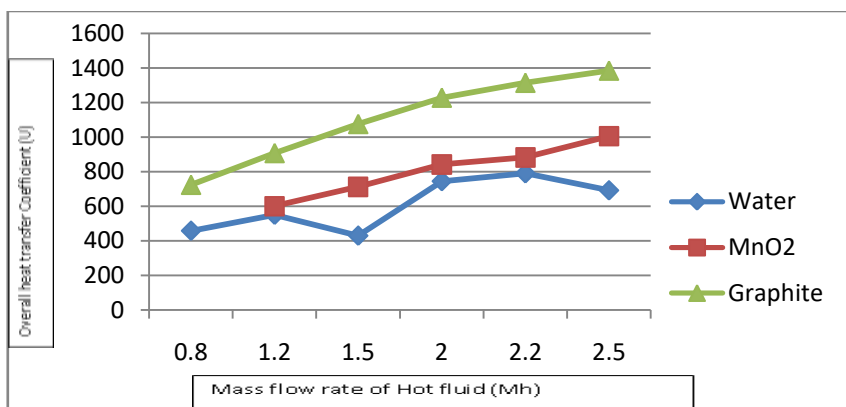
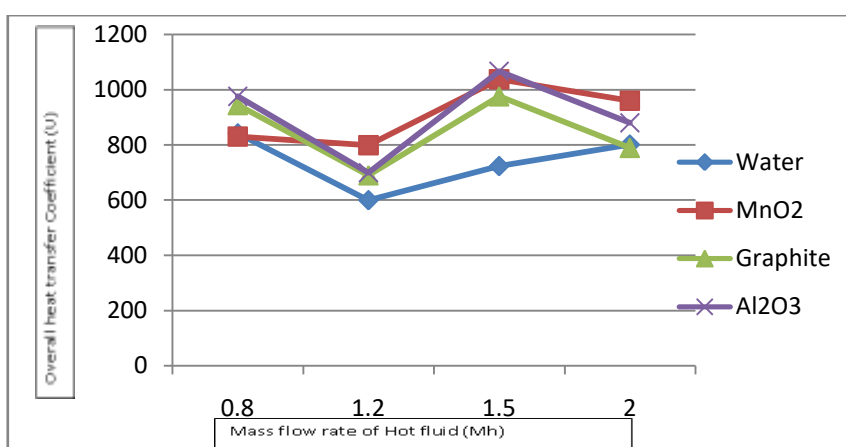


Figure 3: 0.75% at Mc=1 (75 gm of Nano particle in 10 lits of cold water)



.Figure 1: 0.25% at Mc=1.5 (25 gm of Nano particle in 10 lits of cold water)

Figure 5 showing variation for 0.50% concentration of Nano particles. Mass flow rate of cold water is kept constant at 1.5 LPM while mass flow rate of hot water varied from 0.8 to 2.0 LPM. In this case the pure water of the overall heat transfer coefficient varying from 750 to 800 w/m² K. Similarly the corresponding values of MnO₂ the overall heat transfer coefficient is varying from 900 to 1100 w/m² K, In graphite the overall heat transfer coefficient is varying from 800 to 1150 w/m² K and for Al₂O₃ the overall heat transfer coefficient is varying from 900 to 950W/m² K.

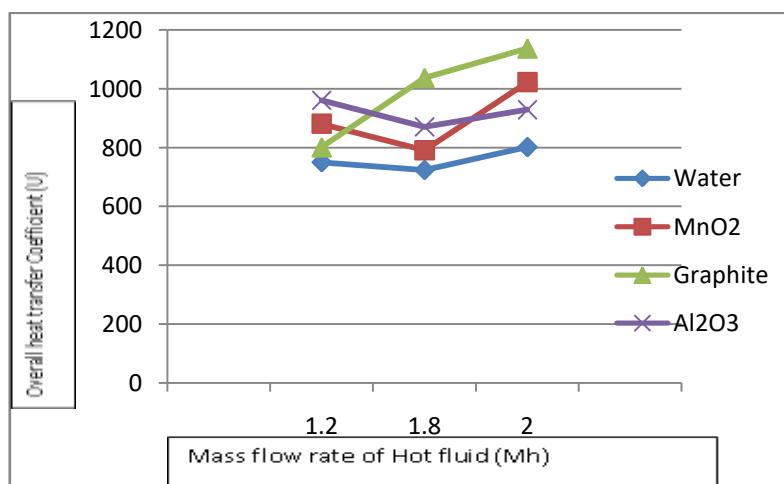


Figure 2 : 0.50% at Mc=1.5 (50 gm of Nano particle in 10 lits of cold water)

Figure 6 showing for case of 0.25% of nano fluid with mass flow rate of the cold water as 1 LPM and by varying mass flow rate of hot water from 0.8 to 2 LPM. It is observed that for all the three fluids (MnO_2 , graphite and Al_2O_3) average enhancement ratio is 1.5.

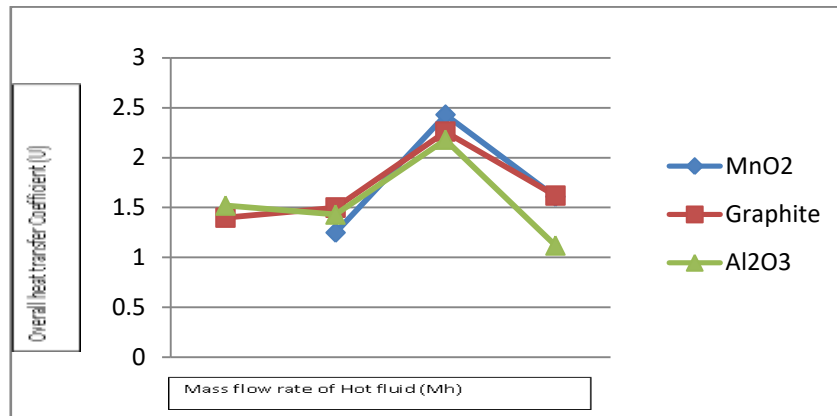


Figure 3 : 0.25% of Enhancement ratio at $M_c = 1$ (25 gm of Nano particle in 10 lits of cold water)

Figure 7 showing for case of 0.50% of nano fluid to the mass flow rate of the cold water is 1 LPM when the varying mass flow rate of hot water from 0.8 to 1.8 LPM. In this observed that for all the three fluids (MnO_2 , graphite and Al_2O_3) have average enhancement ratio is 1.6.

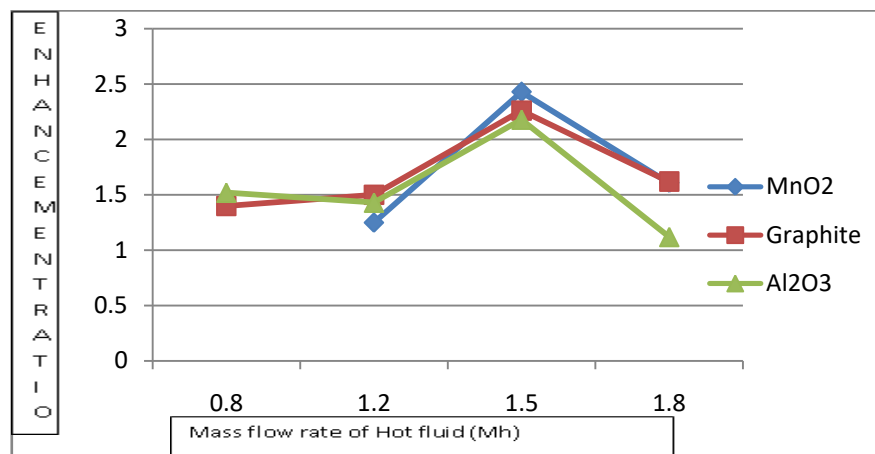


Figure 4: 0.50% of Enhancement ratio at $M_c = 1$ (50 gm of Nano particle in 10 lits of cold water)

Figure 8 showing for case of 0.75% of nano fluid to the mass flow rate of the cold water is 1 LPM when the varying mass flow rate of hot water from 0.8 to 2.2 LPM. The enhancement ratio of MnO_2 is observed around 1.8, similarly observed in Graphite the enhancement ratio is 2.5.

Figure 6 showing for case of 0.25% of nano fluid to the mass flow rate of the cold water is 1.5 LPM when the varying mass flow rate of hot water from 0.8 to 1.8 LPM. The enhancement ratio of MnO_2 is observed around 1.8, similarly observed in Graphite and Al_2O_3 are 1.4 and 1.2 respectively.

Figure 10 showing for case of 0.50% of nano fluid to the mass flow rate of the cold water is 1.5 LPM when the varying mass flow rate of hot water from 0.8 to 1.8 LPM. The enhancement ratio

of MnO_2 is observed around 1.7, similarly observed in Graphite and Al_2O_3 are 1.3 and 1.4 respectively.

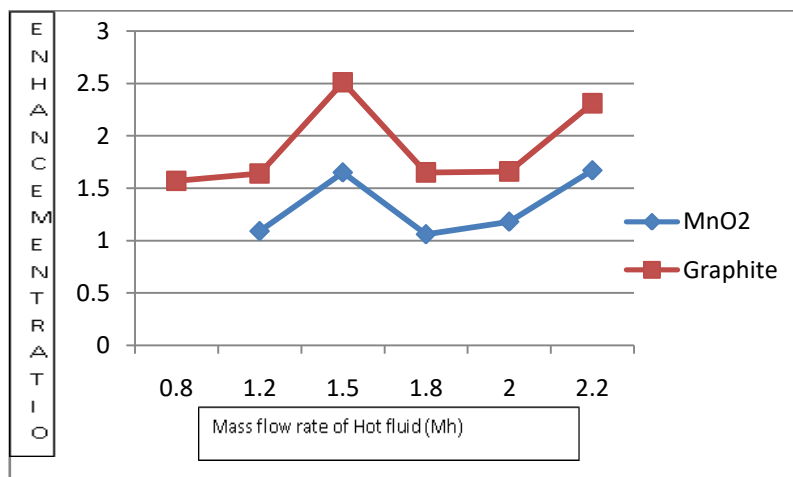


Figure 5 : 0.75% of Enhancement ratio at $Mc=1$ LPM (75 gm of Nano particle in 10 lits of cold water)

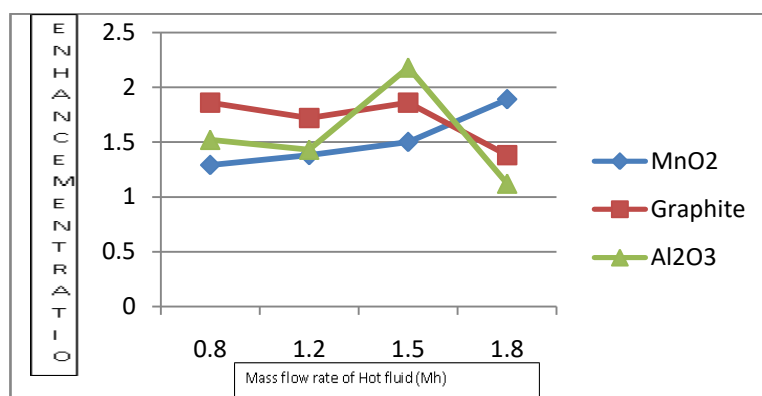


Figure 6: 0.25% of Enhancement ratio at $Mc=1.5$ (25 gm of Nano particle in 10 lits of cold water)

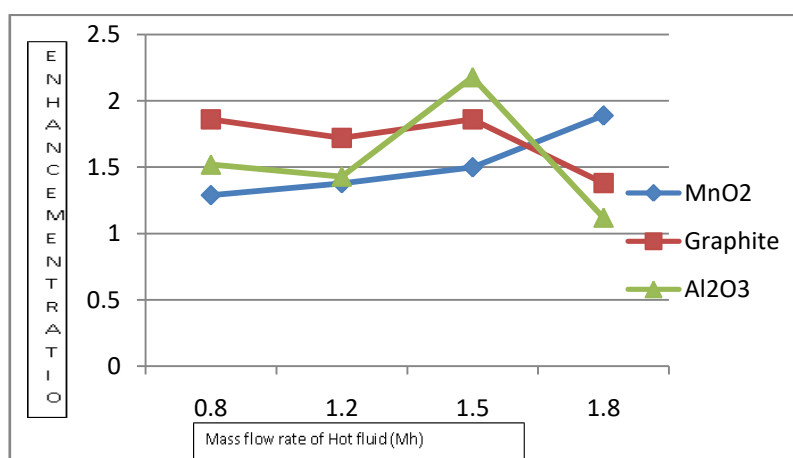


Fig 10: (0.50%) of Enhancement ratio at $Mc=1.5$ LPM (50 gm of NanoParticle in 10 lits of cold water)

7. CONCLUSION

Based on the results of this study, the following specific conclusions were drawn Al_2O_3 , MnO_2 and Graphite nano particles are mixed with base fluid and are termed as nano fluid. Here the base fluid is water and the entire experiment is done in the heat exchanger, initially the experiment is done with water and then with nano fluids. The nano fluids are prepared at different volume concentration (0.25 to 1.5%). Nano fluid readings are compared with base fluid (water) readings.

- At cold water flow rate of 1 LPM and particle concentration 0.25%, while the average overall heat transfer coefficient for water is 550 w/m²k corresponding values for MnO_2 , graphite and Al_2O_3 are 700, 950 and 1000 respectively, as evident from figure 1
- At cold water flow rate of 1. LPM and particle concentration 0.50%, while the average overall heat transfer coefficient for water is 600 w/m²k corresponding values for MnO_2 , graphite and Al_2O_3 are 1100, 900 and 1250 respectively, as evident from figure 2
- At cold water flow rate of 1 LPM and particle concentration 0.75%, while the average overall heat transfer coefficient for water is 650 w/m²k corresponding values for MnO_2 and graphite are 800 and 1250 respectively, as evident from figure 3
- At cold water flow rate of 1.5 LPM and particle concentration 0.25%, while the average overall heat transfer coefficient for water is 700 w/m²k corresponding values for MnO_2 , graphite and Al_2O_3 are 900, 800 and 950 respectively, as evident from figure 4
- At cold water flow rate of 1.5 LPM and particle concentration 0.50%, while the average overall heat transfer coefficient for water is 775 w/m²k corresponding values for MnO_2 , graphite and Al_2O_3 are 1000, 975 and 925 respectively, as evident from figure 5
- At cold water flow rate of 1 LPM and particle concentration 0.25%, while the comparing with corresponding values (range of 0.8 to 2 LPM) of mass flow rate of hot water for the three fluids (MnO_2 , graphite and Al_2O_3) of the average enhancement Ratio is 1.5, as evident from figure
- At cold water flow rate of 1 LPM and particle concentration 0.50%, when the comparing with corresponding values (range of 0.8 to 1.8 LPM) of mass flow rate of hot water for the three fluids (MnO_2 , graphite and Al_2O_3) of the average enhancement Ratio is 1.6, as evident from figure
- At cold water flow rate of 1 LPM and particle concentration 0.75%, when the comparing with corresponding values (range of 0.8 to 2.2 LPM) of mass flow rate of hot water for the fluids of MnO_2 , and graphite of the average enhancement Ratio is 1.8 and 2.5 respectively, as evident from figure 8
- At cold water flow rate of 1.5 LPM and particle concentration 0.25%, when the comparing with corresponding values (range of 0.8 to 1.8 LPM) of mass flow rate of hot water for the fluids of MnO_2 , graphite and Al_2O_3 of the average enhancement Ratio is 1.8, 1.4 and 1.2 respectively, as evident from figure 9

At cold water flow rate of 1.5 LPM and particle concentration 0.50%, when the comparing with corresponding values (range of 0.8 to 1.8 LPM) of mass flow rate of hot water for the fluids of MnO_2 , graphite and Al_2O_3 of the average enhancement Ratio is 1.7, 1.3 and 1.4 respectively, as evident from figure 10

REFERENCES

1. MadhushreeKole, T.K.Dey; Effect of prolonged ultrasonication on the thermal conductivity of zno–ethylene glycol nano fluids; Thermo physical Measurements Laboratory, Cryogenic

Engineering Centre, Indian Institute of Technology, Kharagpur 721302, india; thermochemicalActa 535(2012).

2. MadhushreeKole, T.K. Dey*; Thermal performance of screen mesh wick heat pipes using Water-based copper nano fluids; Thermophysical Measurements Laboratory, Cryogenic Engineering Centre, Indian Institute of Technology Kharagpur, Kharagpur 721302, India; Applied Thermal Engineering 50 (2013) 763e770.
3. MadhushreeKole, T.K. Dey; Role of interfacial layer and clustering on the effective thermal conductivity Of CuO–gear oil nano fluids; Thermophysical Measurements Laboratory, Cryogenic Engineering Centre, Indian Institute of Technology, Kharagpur 721 302, (WB), India; Experimental Thermal and Fluid Science 35 (2011) 1490–1495.
4. MadhushreeKole, T.K. Dey; Thermophysical and pool boiling characteristics of zno-ethylene glycol nano fluids; Thermophysical Measurements Laboratory, Cryogenic Engineering Centre, Indian Institute of Technology, Kharagpur, WB 721302, India; International Journal of Thermal Sciences 62 (2012) 61e70.
5. MadhushreeKole, T.K. Dey; Thermophysical and pool boiling characteristics of zno-ethylene glycol nano fluids; Thermophysical Measurements Laboratory, Cryogenic Engineering Centre, Indian Institute of Technology, Kharagpur, WB 721302, India.
6. C. Yang, W.LiA.Nakayama, 'Convective heat transfer of Nanofluids in a concentric annulus' 'International Journal of thermal Sciences'71 2013).
7. Y. Raja Sekhara, K. V. Sharmab R. ThundilKarupparaja, C Chiranjeevia 'Heat Transfer Enhancement with Al₂O₃ Nano fluids and Twisted Tapes in a pipe for Solar Thermal Applications' 'International Conference On DESIGN and manufacturing, Icon DM 2013'Procedia Engineering 64 (2013) 1474 – 1484.
8. Adnan M. Hussein, K. V. Sharma R. A. Bakar, and K Kadirgama.'The Effect of Nanofluid Volume Concentration on Heat Transfer and Friction Factor inside a Horizontal Tube' Hindawi Publishing Corporation 'Journal of Nanomaterials' Volume 2013, Article ID 859563, 12 pages.
9. Faris Mohammed Ali, W. Mahmood Mat Yunus and ZainalAbidinTalib "Study of the effect of particles size and volume fraction concentration on the thermal conductivity and diffusivity of Al₂O₃ nanofluids "International Journal of Physical Sciences' Vol. 8(28), pp. 1442-1457, 30 July, 2013.
10. S. ZeinaliHeris, Taofik H. Nassan, S. H. Noie, H. Sardarabadi, M. Sardarabadi "Laminar convective heat transfer of Al₂O₃/water nano fluid through square cross-sectional duct" 'International Journal of Heat and Fluid Flow' 2013.
11. A.Azari, M. Kalbasi and M. Rahimi "Cfd and experimental investigation on the heat transfer characteristics of alumina nanofluids under the laminar flow regime" 'Brazilian Journal of Chemical Engineering' Vol. 31, No. 02, pp 469 - 481, April-June, 2014.
12. HassanainGhaniHameed, Prof. Dr.Abudl-Muhsin A. Ragebn Simulation of thermal performance of constant conductance Cylindrical Heat pipe using Nano fluid" Al-Qadisiya Journal For Engineering Sciences, Vol 7, No.4, 2014.

13. Mohamed H. Shedid Computational Heat Transfer for Nanofluids through an Annular Tube" "Proceedings of the International conference on Heat Transfer and fluid flow" Prague, Czech Republic, August 11-12, 2014.
14. Layth W. Ismael, Dr. Khalid Faisal Sultan" A comparative Study on the thermal conductivity of micro and nano fluids by Using Silver and Zirconium Oxide" Al-Qadisiya Journal for Engineering Sciences, Vol. 7, No. 2, 2014.
15. HoomanYarmand, Samira Gharehkhani, SalimNewazKazi, EmadSadeghineehad, and Mohammad Reza safaei " Numerical Investigation of Heat transfer enhancement in a rectangular heated pipe for Turbulent Nano fluid" Hindawi Publishing Corporation, Scientific World Journal. Volume 2014, Article ID 369593, 9 pages.
16. dnan M. Hussein R. A. Bakar, K. Kadirgama, K. V. Sharma" Heat transfer augmentation of a car radiator using nanofluids " Heat and mass transfer of journal , November 2014 volume 50, Issue 11, pp 1553-1561.
17. Sami D. Salman, Abdul Amir H. Kadhum, Mohd S. Takriff, and Abu BakarMohamad "Heat Transfer Enhancement of Laminar Nanofluids Flow in a Circular Tube Fitted with Parabolic-Cut Twisted Tape Inserts" Hindawi Publishing Corporation, Scientific World Journal Volume 2014, Article ID 543231, 7 pages.
18. Hsien-Hung Ting and Shuhn-ShyurngHou" Investigation of Laminar Convective Heat Transfer for Al₂O₃-Water Nanofluids Flowing through a Square Cross-Section Duct with a Constant Heat Flux" Materials 2015, 8, 5321-5335.
19. RabahNebbati, MahfoudKadj" Study of forced convection of a nanofluid used as a heat carrier in a microchannel heat sink" "International Conference on Technologies and Materials for Renewable Energy, Environment and Sustainability, TMREES15", 2015.
20. Khalid Faisal Sultan "Numerical Solution of Heat Transfer and Flow of Nanofluids in Annulus With Fins Attached on the Inner Cylinder" Journal of Babylon University / Engineering Sciences/ No.(2) / Vol.(23): 2015.
21. Dr.Khalid Faisal Sultan"Augmentation of Heat Transfer Through Heat Exchanger With and Without Fins by Using Nano fluids" Journal of Engineering and Development, Vol. 19. No. 4, July 2015, ISSN 1813- 7822.
22. Abdolbaqi Mohammed Khdher, RizalmanMamat, Nor Azwadi, CheSidik "The Effects of Turbulent Nano fluids and Secondary Flow on the Heat Transfer through a straight channel"recent Advances in Mathematical and Computational Methods, 2015.